

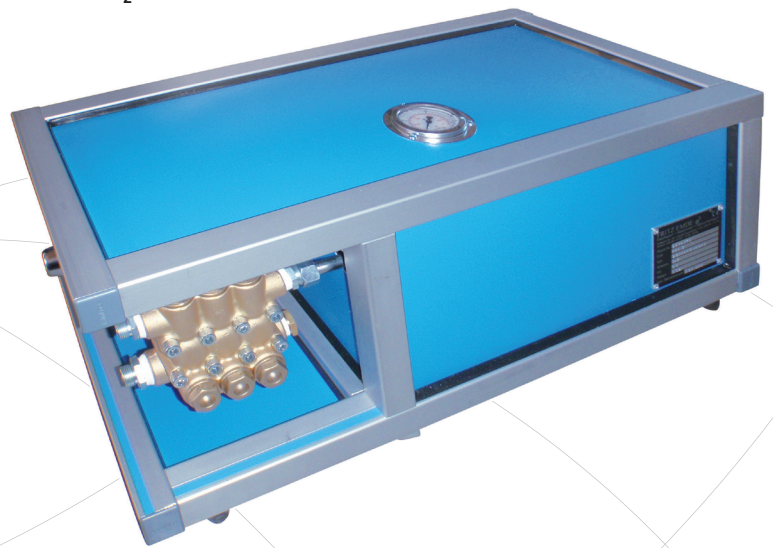
CO₂-Filling Units

No. 251 000 · KU3 · KUD3 · KUS3

The KU3 is a compact, mobile CO₂-filling unit. It is especially appropriate for service offices and service vehicles to fill CO₂ directly on-site.

The unit is equipped with:

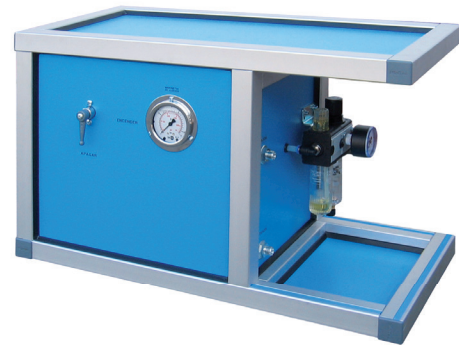
- » 2 pcs. CO₂-hose (160 bar)
- » Pressure gauge (160 bar)
- » Electric cable 230 V
- » Safety valve (130 bar)



TECHNICAL DATA

KU3 (No. 251 000)

Construction:	steel construction with sheet casing
Pump:	3-piston-pump
Motor:	AC 230 V, 16 A
Weight:	approx. 34 kg
Capacity:	max. 3.5 kg/min
Dimensions (l x w x h):	approx. 550 x 400 x 340 mm
Colour:	hammer finish painted blue



TECHNICAL DATA

KUD3 (air compressed) (No. 203 000)

Construction:	aluminium
Motor:	Compressed-air driven 8 – 10 bar
Weight:	approx. 25 kg
Capacity:	max. 3.5 kg/min
Dimensions (l x w x h):	approx. 550 x 400 x 340 mm
Colour:	hammer finish painted blue

TECHNICAL DATA

KUS3 (No. 231 000)

Construction:	aluminium
Pump:	3-piston-pump
Motor:	three-phase current 230 V/400 V, 12 A
Weight:	approx. 36 kg
Capacity:	max. 3.5 kg/min
Dimensions (l x w x h):	approx. 550 x 400 x 340 mm
Colour:	hammer finish painted blue